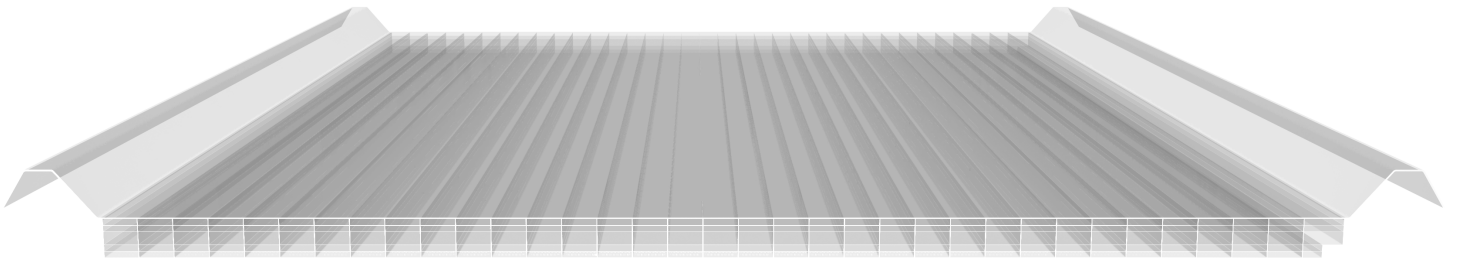
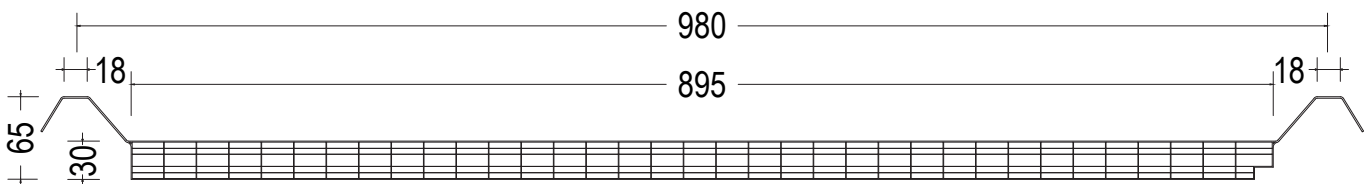
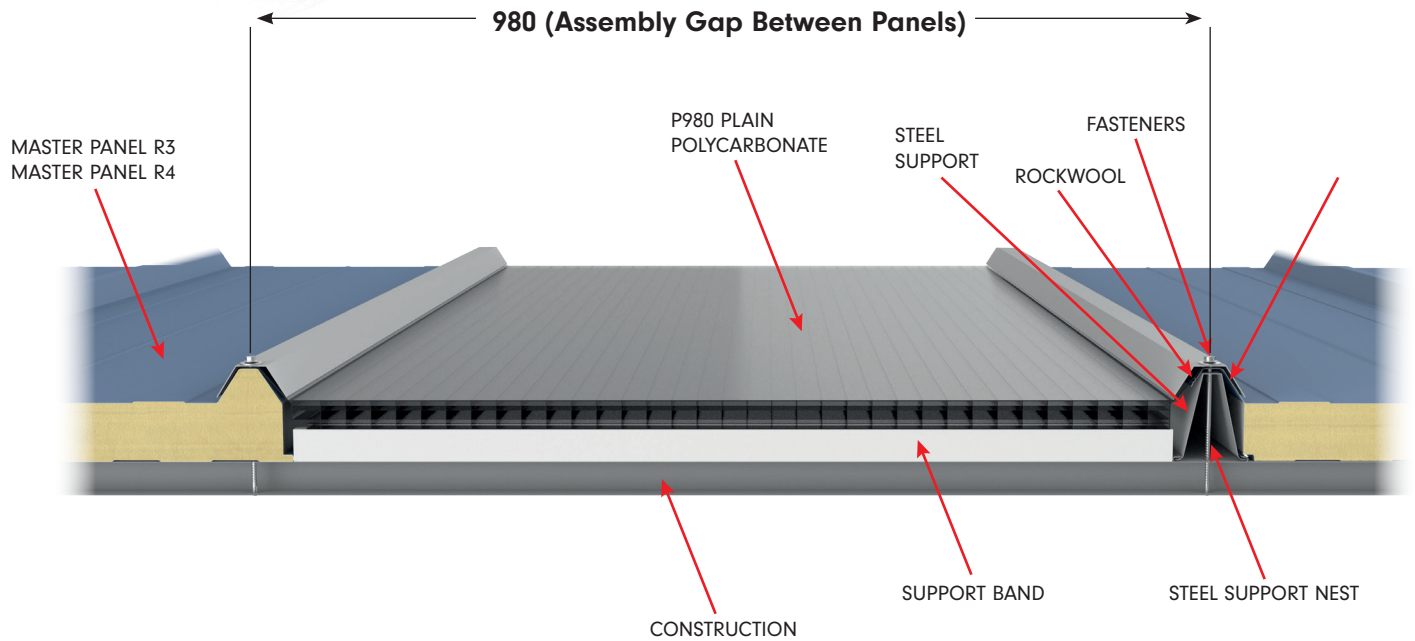


P980 Plain Polycarbonate Panel



- Precise compatibility with any thickness of Nova Series sandwich panels. This compatibility provides fast and easy assembly.
- Provides high waterproofing and thermal insulation when installed with sandwich panels.
- Suitable for every roof slope where sandwich panels can be installed.
- Can also be applied as cladding if Nova Serisi sandwich panels are applied to the exterior.
- High heat resistance.
- High UV resistance.
- High shock resistance.
- Produced transparent or opaque for different light requirements
- Can be produced in every length according to architectural requirements and transportation.





Thickness	30 mm
Net Coverage Width	980 mm
Assembly Gap Between Panels	980 mm
Length	Min 100 mm,
Max. Depending on Transport and Assembly Conditions	2,30 W/m ² K
Heat Transmission	1,35 W/m ² K
Coefficient of Thermal Expansion	0,065 mm/m°C
Light Transmittance	Transparent 59%, Opaque 30%
Temperature Resistance	-40 °C/ + 120 °C

