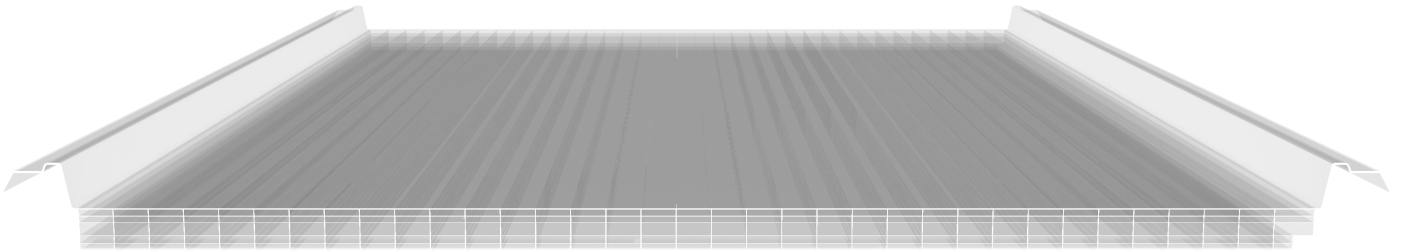
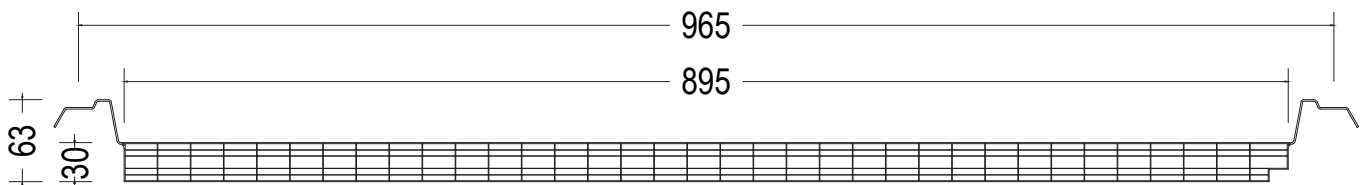
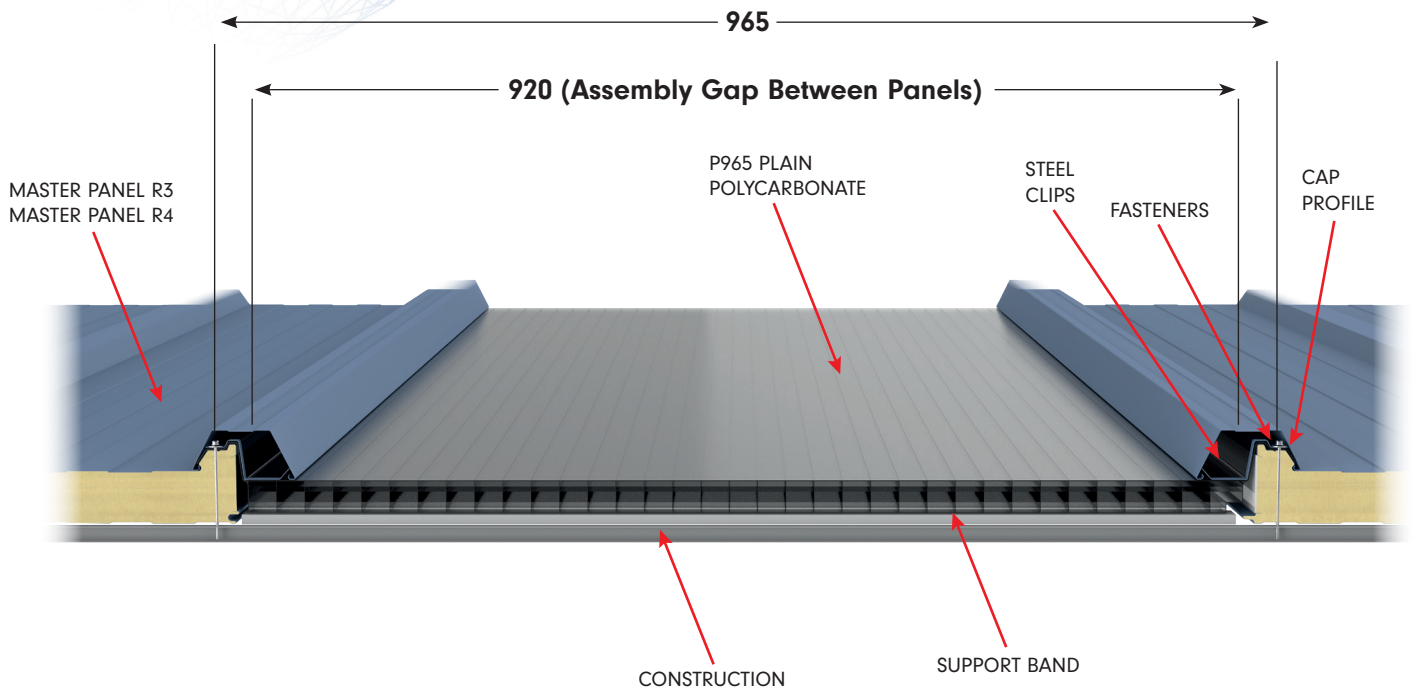


## P965 Plain Polycarbonate Panel



- Precise compatibility with any thickness of Master Panel R4 and Master Panel R3 sandwich panels. This compatibility provides fast and easy assembly.
- Can be reinstalled after removing the intended sandwich panel on the completed surface of Master Panel 915 R3 only without having to remove the all surface due to not having overlapping form.
- The capped joints and concealment of screws provides architectural aesthetics and prevents corrosion.
- Provides high waterproofing and thermal insulation when installed with sandwich panels.
- Suitable for every roof slope where sandwich panels can be installed.
- Can also be applied as cladding if Master Panel R4 and Master Panel R3 sandwich panels are applied to the exterior.
- High heat resistance.
- High UV resistance.
- High shock resistance.
- Produced transparent or opaque for different light requirements.
- Can be produced in every length according to architectural requirements and transportation.





<b>Thickness</b>	30 mm
<b>Net Coverage Width</b>	965 mm
<b>Assembly Gap Between Panels</b>	920 mm
<b>Length</b>	Min 100 mm,
<b>Max. Depending on Transport and Assembly Conditions</b>	2,30 W/m <sup>2</sup> K
<b>Heat Transmission</b>	1,35 W/m <sup>2</sup> K
<b>Coefficient of Thermal Expansion</b>	0,065 mm/m°C
<b>Light Transmittance</b>	Transparent 59%, Opaque 30%
<b>Temperature Resistance</b>	-40 °C/ + 120 °C

