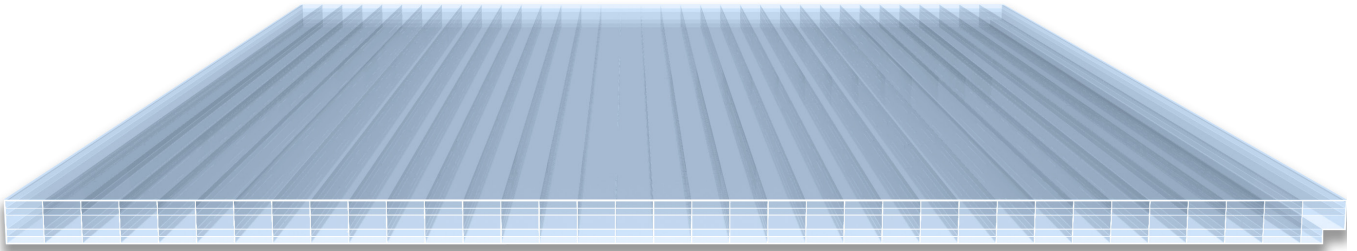
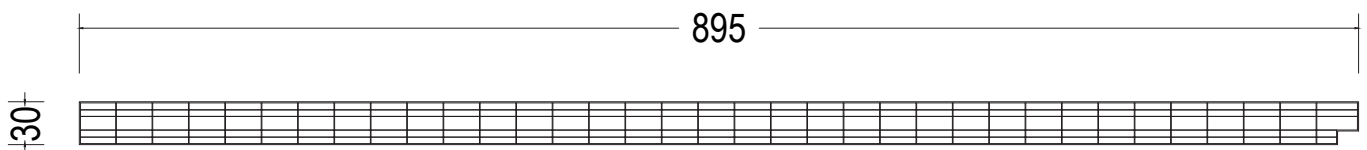
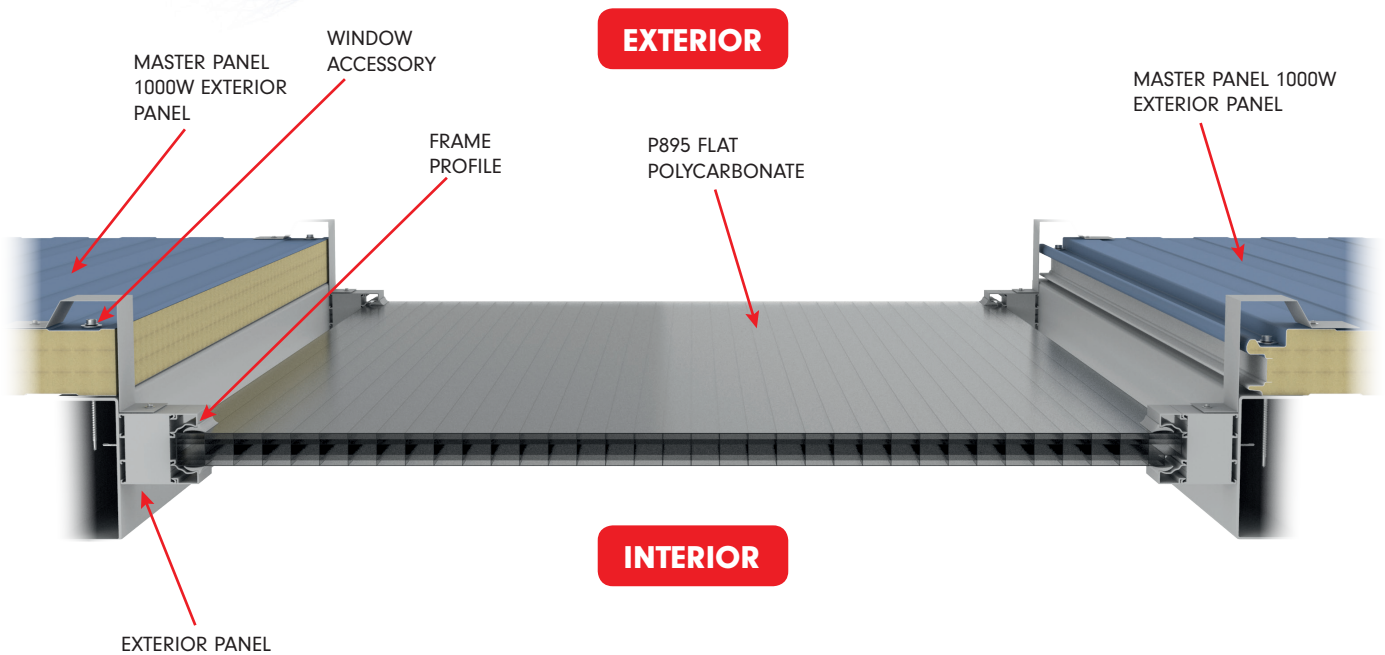


## P895 Flat Polycarbonate Panel



- Used as skylight material in structures with Master Panel exterior panel application.
- Since there is no lateral overlapping they provide an alternative between the frame and glass.
- Provides lightness and low cost advantage compared to glass.
- Possesses high heat resistance.
- High UV resistance.
- High impact resistance.
- Produced in transparent or opal form according to light requirement.
- Produced in the desired size according to architectural and transport requirements
- Maybe bent in vaulted ceiling, etc. applications.





<b>Thickness</b>	30 mm
<b>Useful Width</b>	895 mm
<b>Assembly Gap Between Sandwich Panels</b>	Min 100 mm,
<b>Max. Depending on Transport and Assembly Conditions</b>	Min 100 mm,
<b>Length</b>	1,35 W/m <sup>2</sup> K
<b>Thermal Conductivity Coefficient</b>	0,065 mm/m°C
<b>Thermal Expansion Coefficient</b>	Transparent 59%, Opal 30%
<b>Thermal Conductivity</b>	-40 °C/ + 120 °C
<b>Bending Diameter</b>	Min. 6000 mm

