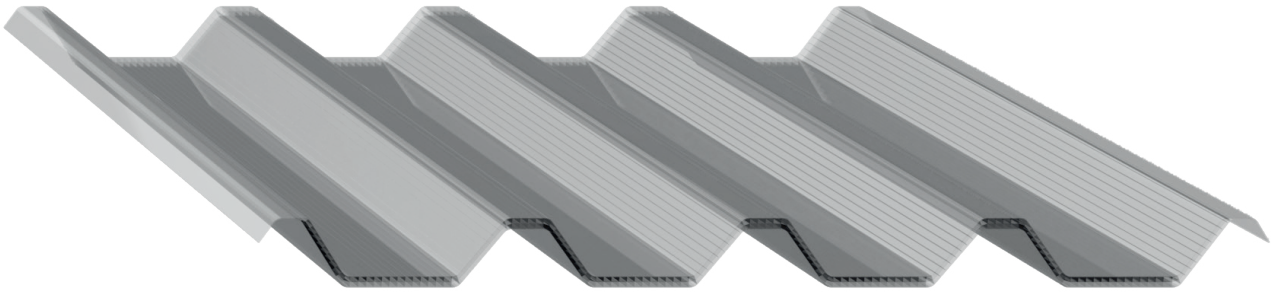
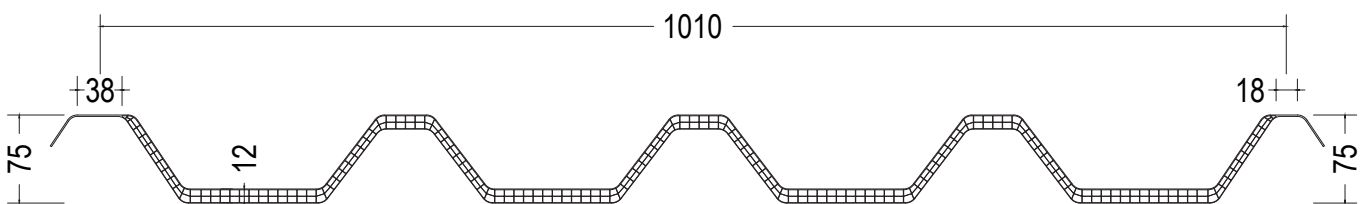


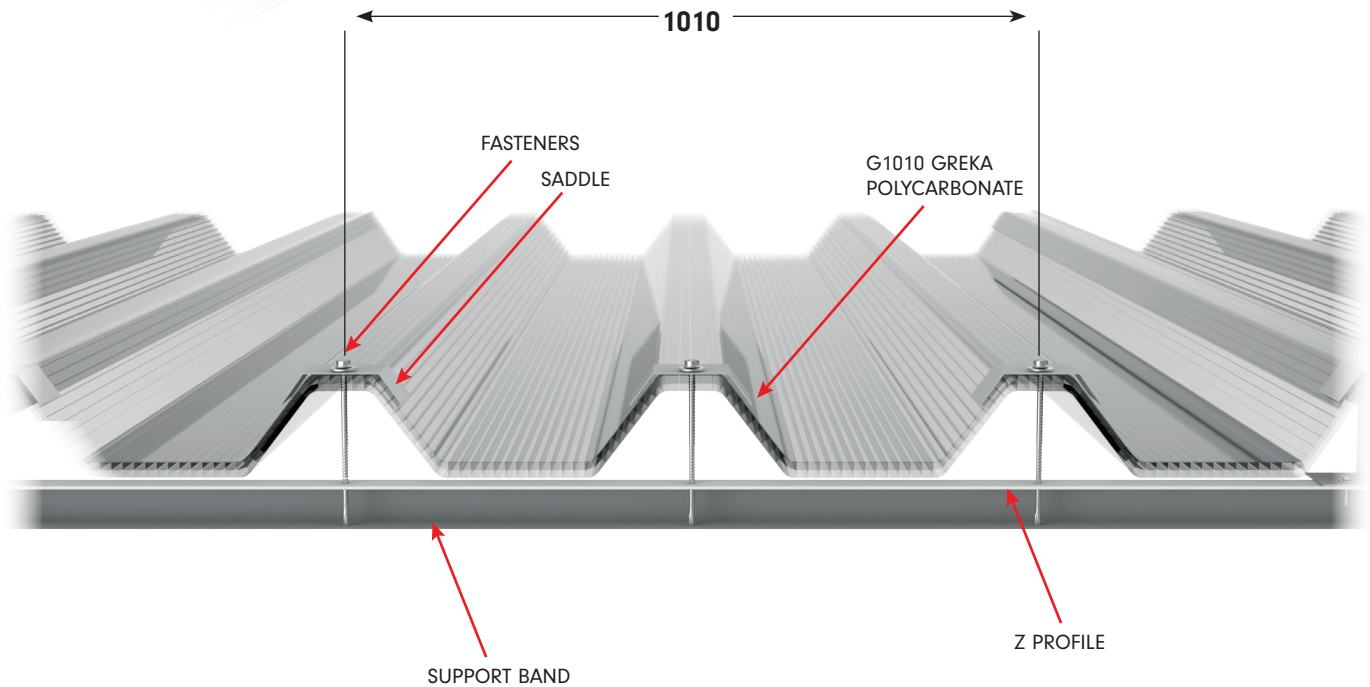
G1010 Greka Polycarbonate Panel



- Suitable for use in buildings that require constant polycarbonate skylight assembly.
- Lateral overlapping form being compatible provides fast and easy assembly.
- The corrugated form provides high load capacity.
- Can be applied to roofs with a slope of over 7%.
- High heat resistance.
- High UV resistance.
- High shock resistance.
- Produced transparent or opaque for different light requirements.
- Can be produced in every length according to architectural requirements and transportation.
- Can be bent for vaulted roofs.



G1010 1701



Thickness	12 mm
Assembly Gap Between Sandwich Panels	1010 mm
Length	Min 100 mm,
Max. Depending on Transport and Assembly Conditions	Min 100 mm,
Heat Transmission Coefficient	2,30 W/m ² K
Coefficient of Thermal Expansion	0,065 mm/m°C
Light Transmittance	Transparent %72, Opal %55
Temperature Resistance	-40 °C/ + 120 °C
Bending radius	Min. 6000 mm

